

Embracing Braambergen

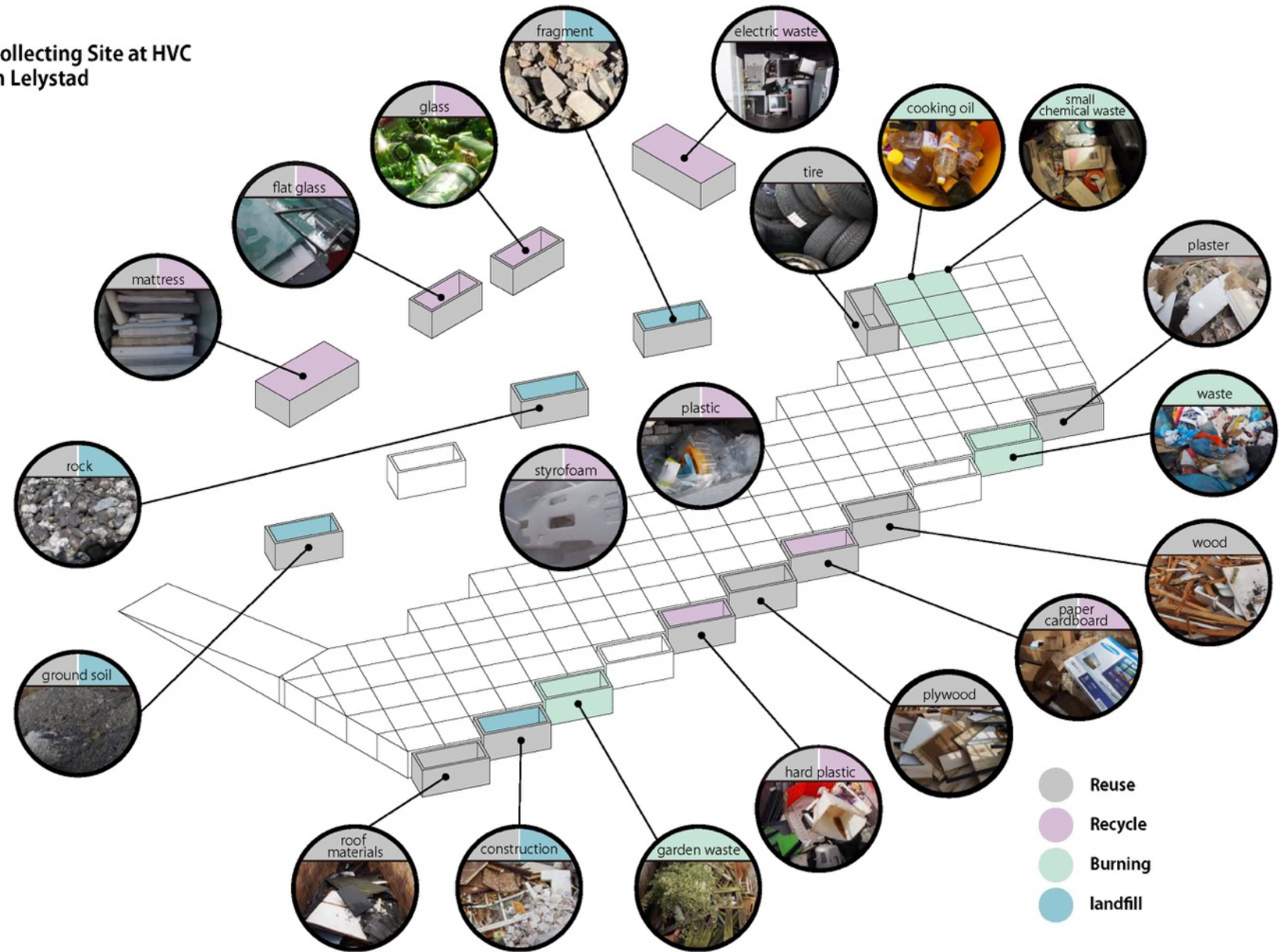
Makiko Morinaga
23 June 2016





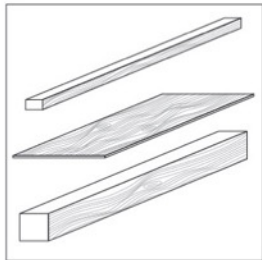
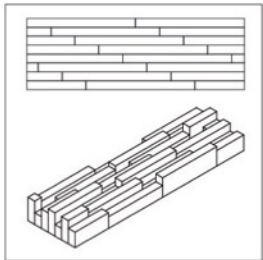
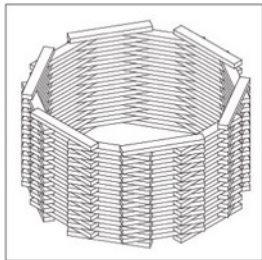
RESEARCH

Collecting Site at HVC
in Lelystad



WOOD

NATURAL WOOD



TYPE
 wood : pine, cedar, oak, etc

DIMENSIONS (L * W * H)
 stick : 3*6*20-180,
 pillar : 10*10*100-200
 board : 15*90,30*30-90

QUALITY
 Some woods are clean, some woods are dirty and wet. There are nail and screw in the wood.

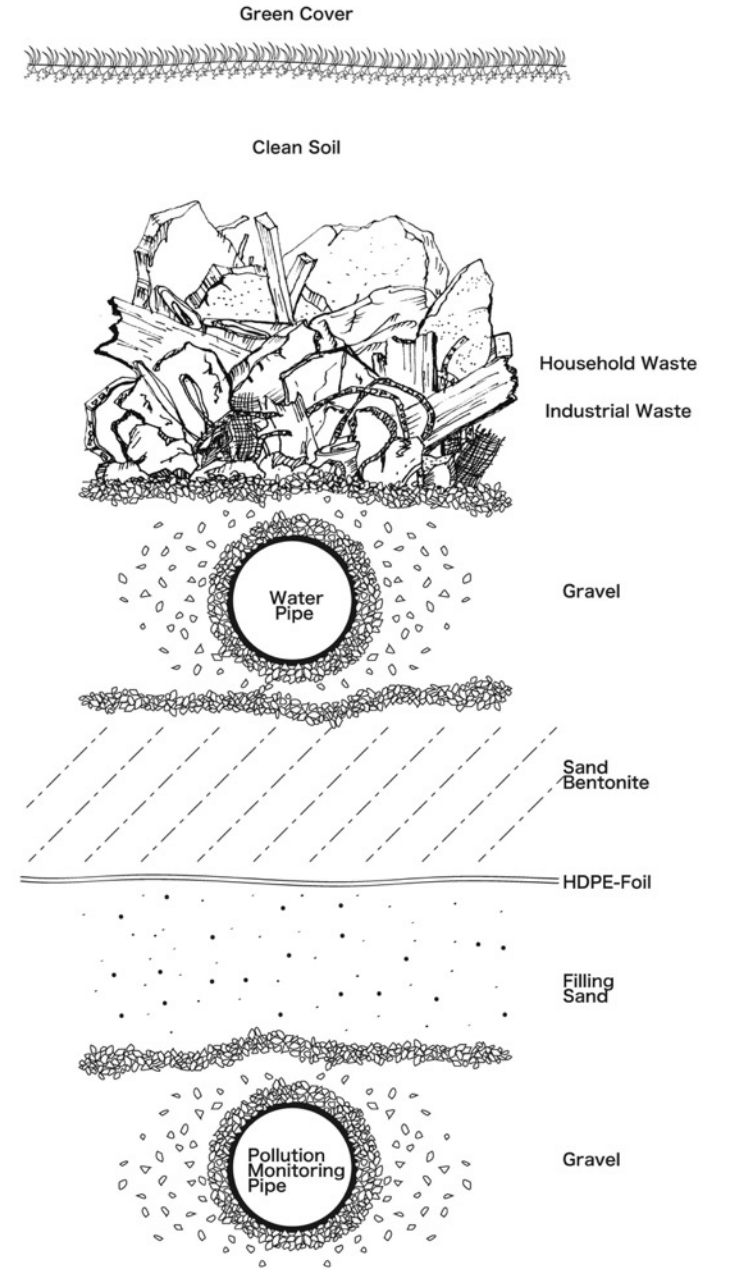
AESTHETIC QUALITY
 natural, painted-white, gray, brown

PROPERTIES
 It is easy to cut, paint, work and process. Crushed thinner timber, it is also possible to use as chip wood. In addition, it can re-use as BBQ charcoal by burning woods.

HEALTH AND SAFETY
 No toxic, but it is easy to get injured with nail and screw in the wood.

NARRATIVES
 The old wood also are used on the outer wall of the house, are sometimes reborn in a small shelter and the children of the play equipment. Warmth of wood gives a sense of security to people and it could be cozy.

WOOD



WOOD

Loenen Memorial Park



THEORY

DEATH

RESPECT

LEISURE

GARDEN

MEMORY

OF

ASH

LEISURE VS CEMETERY THE



The Cemetery as Leisure

An investigation for the use of
the landfill at Braambergen

Makiko Morinaga



contents

- Introduction
- Chapter1: The Japanese people' s
attitude towards cemeteries
- Chapter2: Cemeteries as Leisure in
Western Culture
- Chapter3: Cemeteries or alike in the
Netherlands
- Chapter4: Conclusion

INSIDE

Studio Braambergen - Theory
25,May 2016

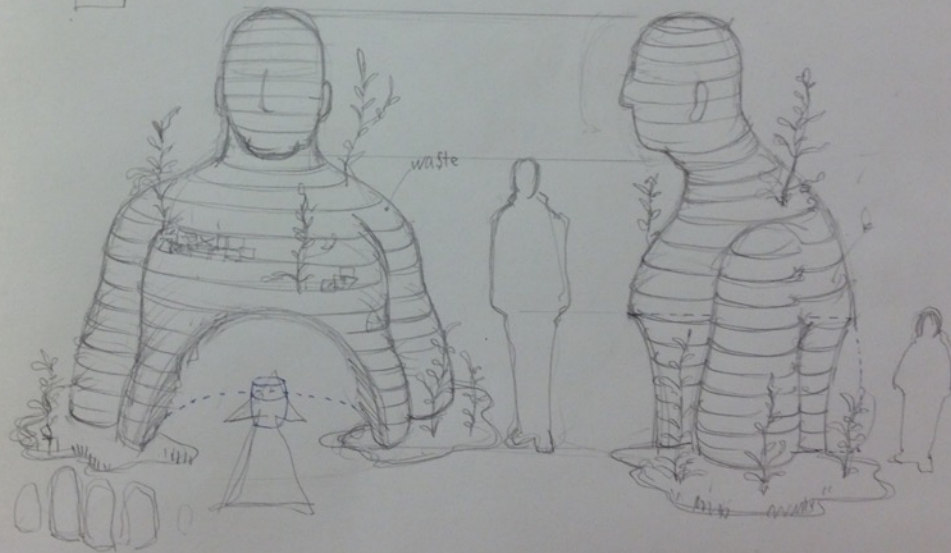
Book "The Cemetery as Leisure"

safety

- * fall prevent
- * safety Net.

Monument - nature x death.

A

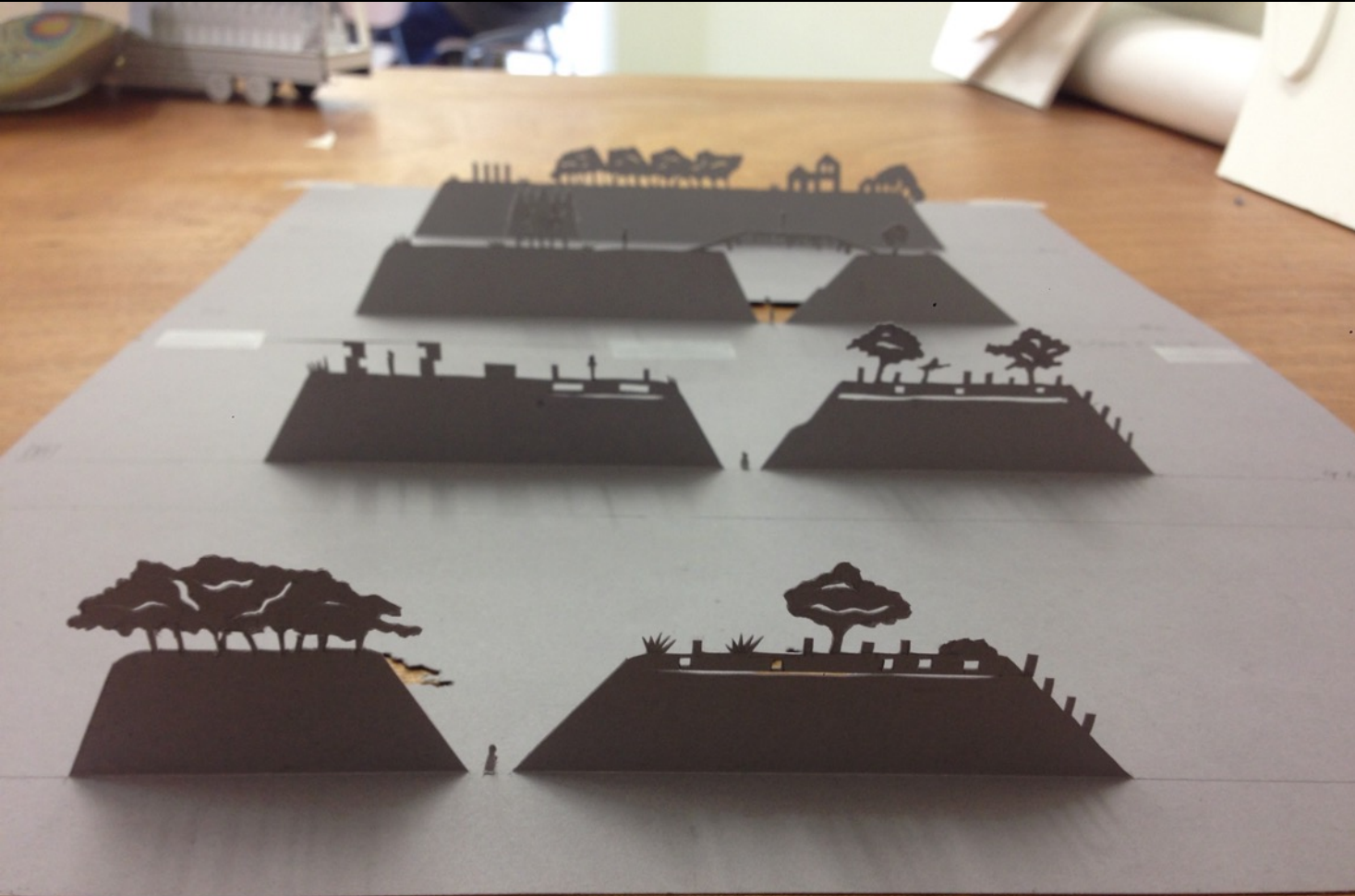


LONG TERM STRATEGY



The Urn Garden

The Chapel





I to I INTERVENTION



The Balcony

